

UNITED STATES PUBLIC LAND SURVEY CORNER CERTIFICATE FOR

Land survey monuments situated in Section 6, Township 106 North, Range 39 West, of the Fifth Principal Meridian, Murray County, Minnesota..

Previously recorded in N/A in County Recorder's Office.

(Show reason for preparing this certificate, the evidence and detailed procedure used in establishing the corner position & monumentation found or placed.)
 MONUMENT DESCRIPTION AND REMARKS: On May 14, 2013 we dug with backhoe for NE corner & found

1" X 3" hub 6' below surface at centerline of Township Road intersection in line with fence to South.

County Highway records showed no information for corner. I accepted wood hub as corner and set a 5/8"

Iron Stake with survey cap 23008 over top center of hub. We also dug with backhoe for North 1/4 Corner

& found nothing; survey by DNR in 1970 indicated stone & iron over stone which we did not find however

the ties were still there so I set a 5/8" Iron Stake with survey cap 23008 as per ties for corner; County

highway record indicated stone & iron also but no date; For East 1/4 corner I accepted wood post at

intersection of North-South & East-West fences as did DNR survey in 1970; County Highway records showed

no information for corner; Also set 5/8" Iron stake with survey cap 23008 at center of Section by

intersection of opposite 1/4 corners as per PLS instructions.

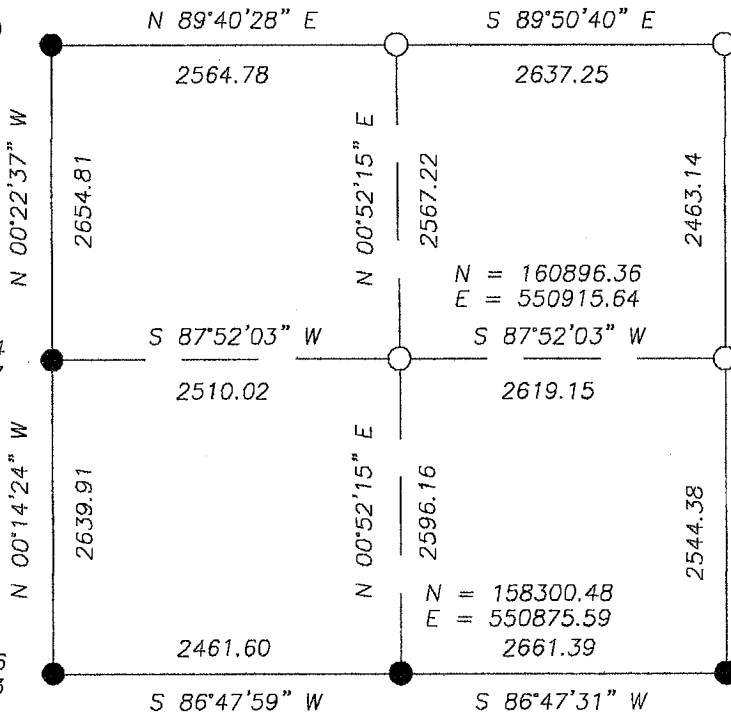
MURRAY COUNTY COORDINATES NAD 83 (2007) **PLAN-VIEW**

N = 163463.27
E = 550954.07

N = 163448.70
E = 548389.36

N = 160802.94
E = 548406.77

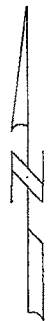
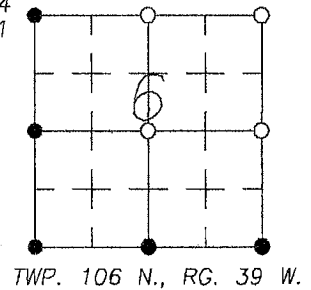
N = 158163.06
E = 548417.83



N = 163456.24
E = 553591.31

N = 160993.80
E = 553532.39

N = 158449.42
E = 553532.81



I hereby certify that this land surveying document was prepared and related survey work was performed by me or under my direct supervision and that I am a duly licensed Land Surveyor under the laws of the State of Minnesota.

Perry L. Zieske 5-16-13
 Signature Date
 Perry Zieske
 License number 23008

Corners to be Indexed

Corners	Section	Township	Range
N 1/4	6	106	39
NE	6	106	39
E 1/4	6	106	39
CTR.	6	106	39